
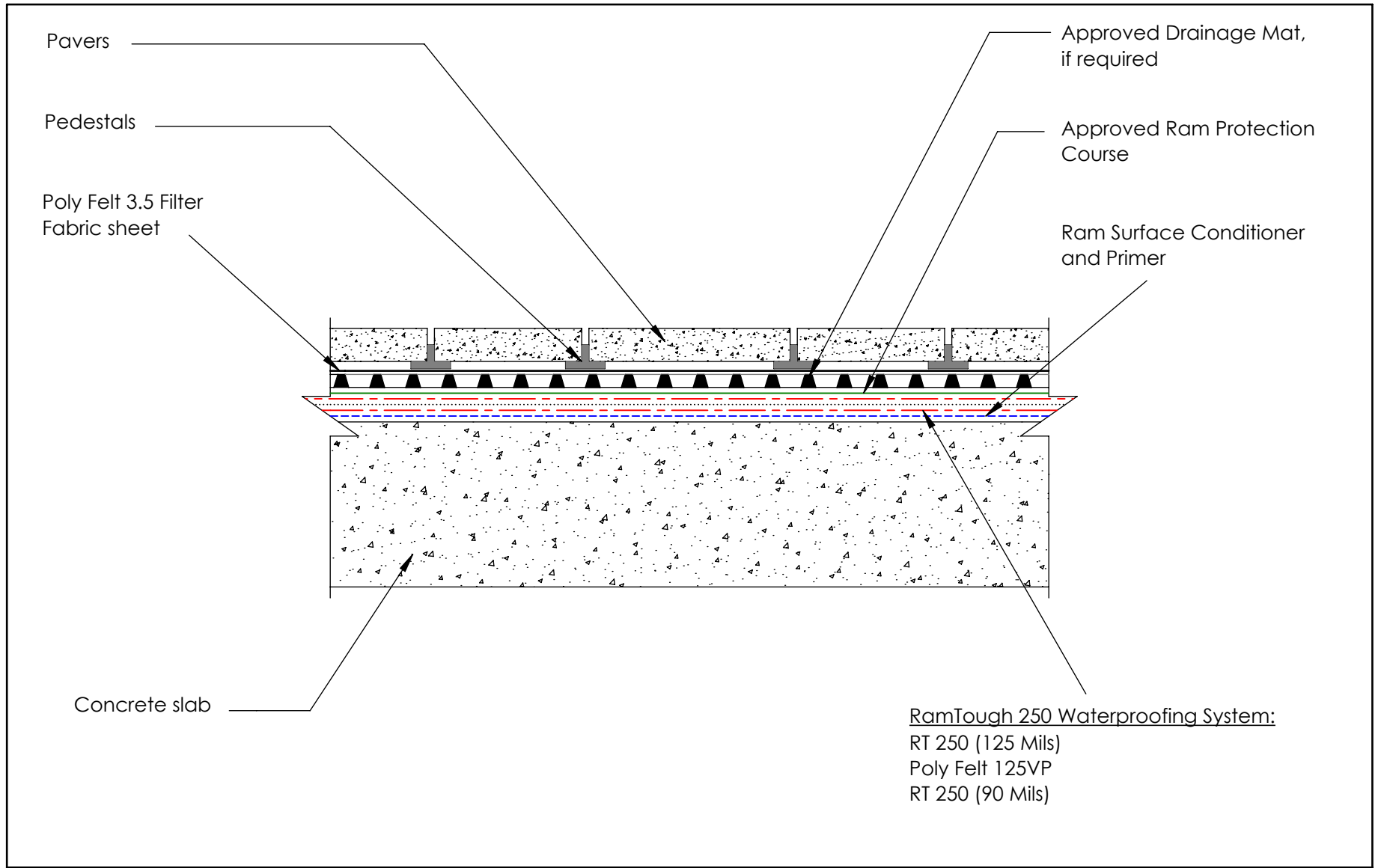

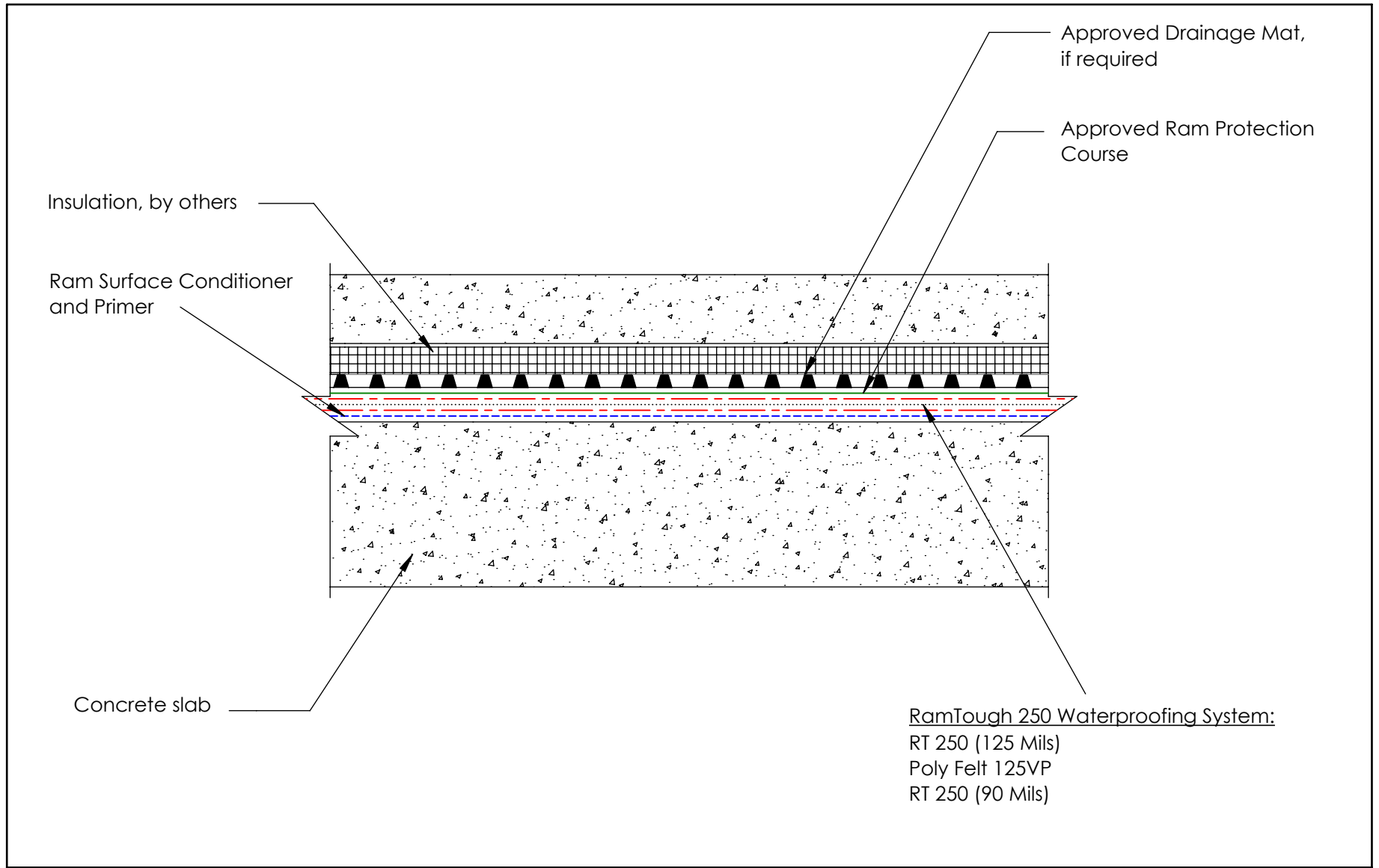



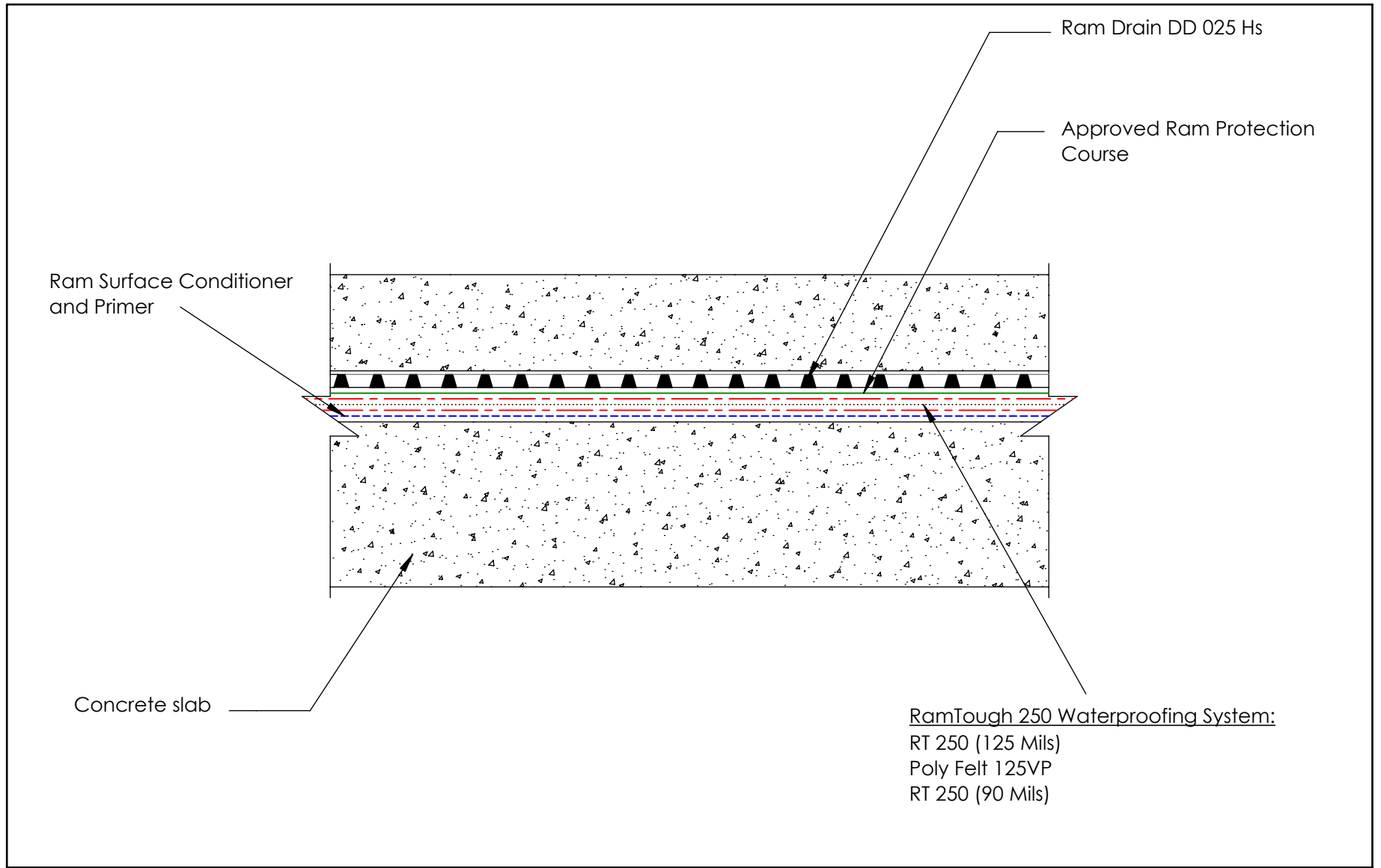
<p>Contact Info:</p> <p>www.barrettroofs.com P: 1-800-647-0100</p>		<p>Drawing Detail:</p> <p>RT250 on Insulated Plaza Deck with Pavers</p> <p>* Drawing not to scale</p>	<p>File Name:</p> <p>RT250 - System - 01</p>	<p>Date:</p> <p>11/21/2019</p>
			<p>Drawing Number:</p> <p>01</p>	<p>Drawn By:</p> <p>N.C.</p>




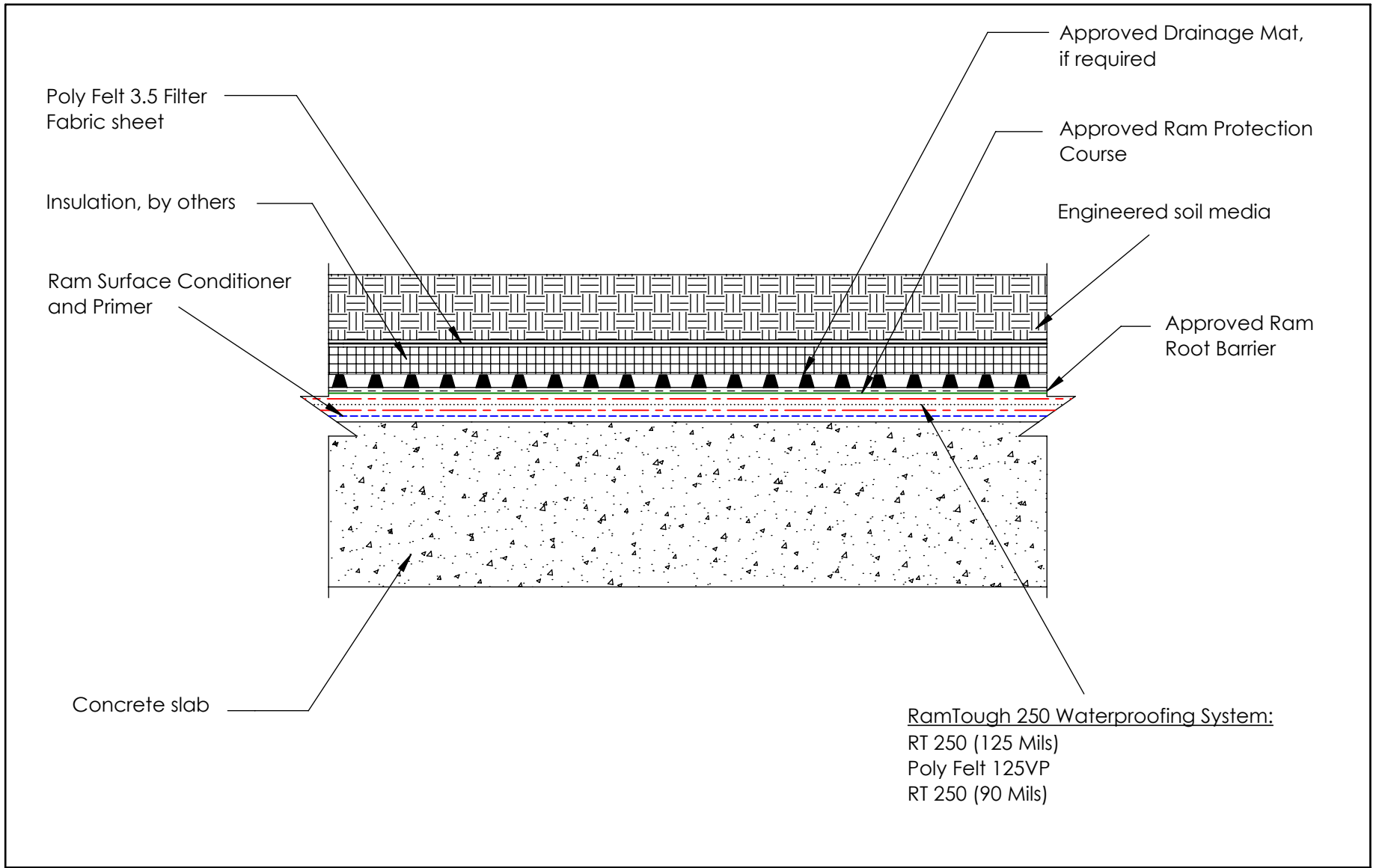
<p>Contact Info:</p> <p>www.barrettroofs.com P: 1-800-647-0100</p>	 <p>Drawing Detail:</p> <p>RT250 on non-Insulated Plaza Deck with Pavers</p> <p>* Drawing not to scale</p>	<p>File Name:</p> <p>RT250 - System - 02</p>	<p>Date:</p> <p>11/21/2019</p>
		<p>Drawing Number:</p> <p>02</p>	<p>Drawn By:</p> <p>N.C.</p>




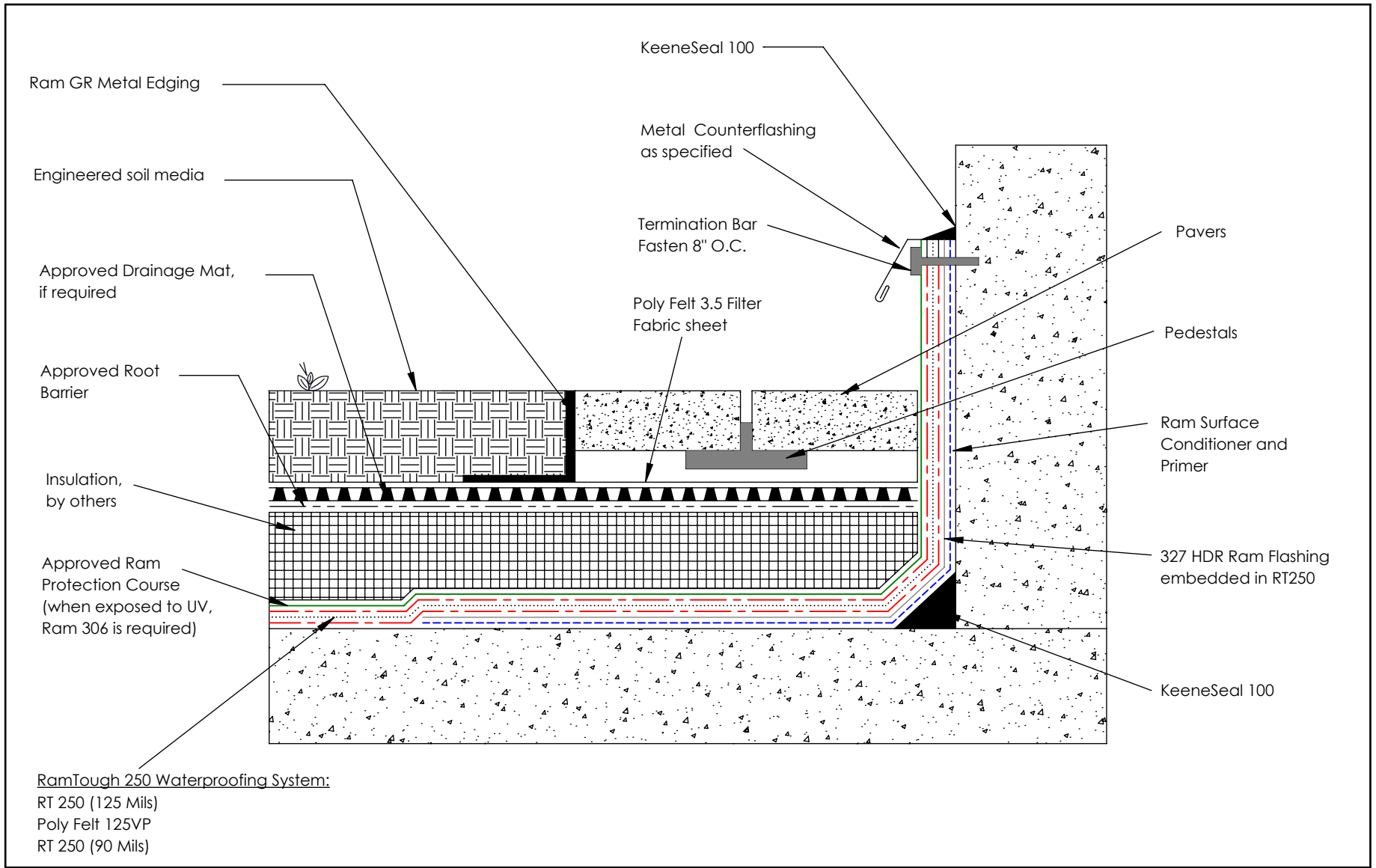
<p>Contact Info:</p> <p>www.barrettroofs.com P: 1-800-647-0100</p>		<p>Drawing Detail:</p> <p>RT250 on Insulated Plaza Deck with poured concrete</p> <p>* Drawing not to scale</p>	<p>File Name:</p> <p>RT250 - System - 03</p>	<p>Date:</p> <p>11/21/2019</p>
		<p>Drawing Number:</p> <p>03</p>	<p>Drawn By:</p> <p>N.C.</p>	



Contact Info: www.barrettroofs.com P: 1-800-647-0100		Drawing Detail: RT250 on non-Insulated Plaza Deck with poured concrete	File Name: RT250 - System - 04	Date: 11/21/2019
		* Drawing not to scale	Drawing Number: 04	Drawn By: N.C.



Contact Info: www.barrettroofs.com P: 1-800-647-0100		Drawing Detail: RT250 on Planter * Drawing not to scale	File Name: RT250 - System - 05	Date: 11/21/2019
			Drawing Number: 05	Drawn By: N.C.



Contact Info:

www.barrettroofs.com
 P: 1-800-647-0100



Drawing Detail:

RT250 on Typical Green Roof Assembly

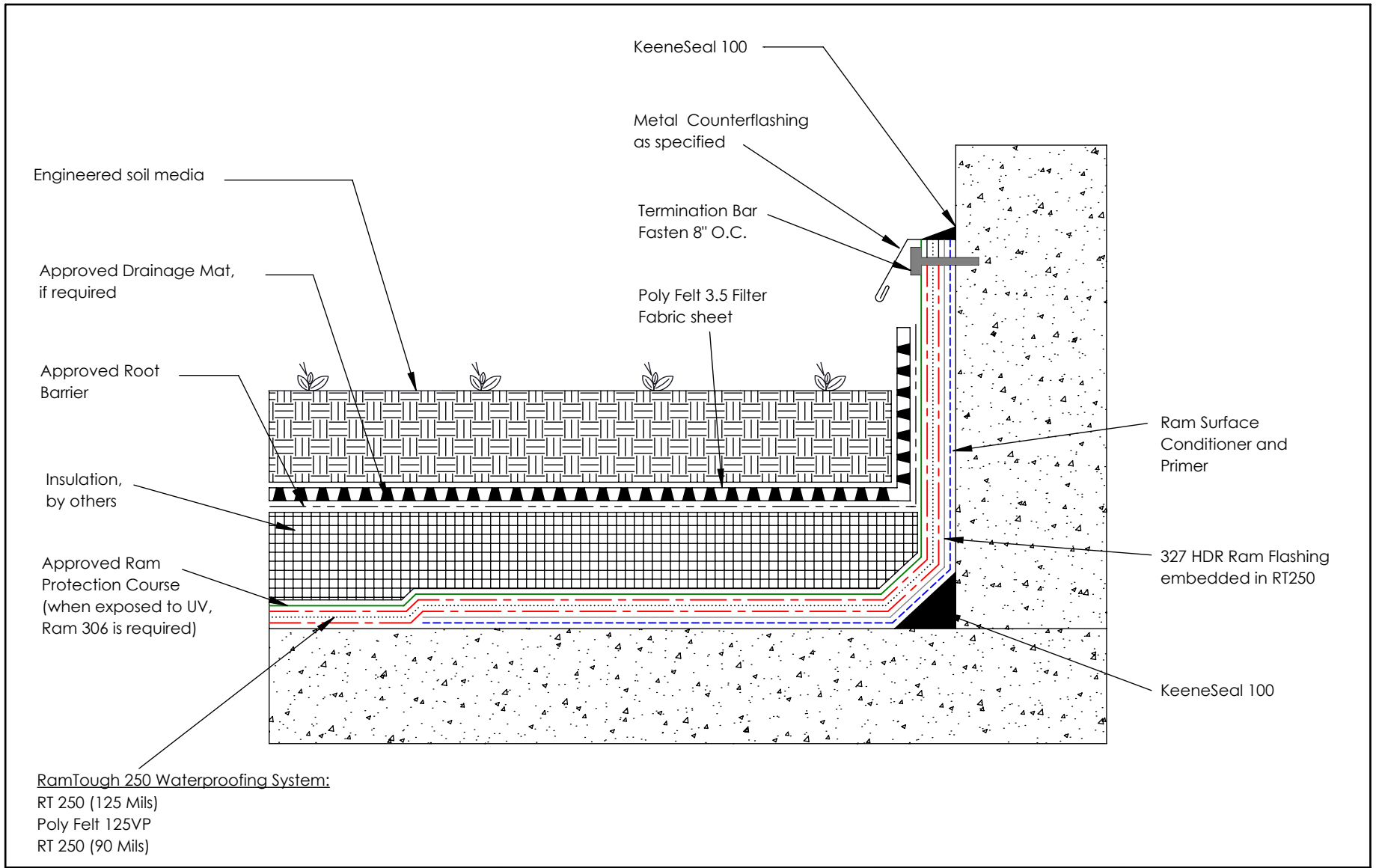
* Drawing not to scale

File Name:
 RT250 - System - 06

Drawing Number:
 06

Date:
 11/21/2019

Drawn By:
 N.C.



Contact Info:

www.barrettroofs.com
 P: 1-800-647-0100



Drawing Detail:

RT250 on Typical Intensive BP
 on Typical Green Roof Assembly

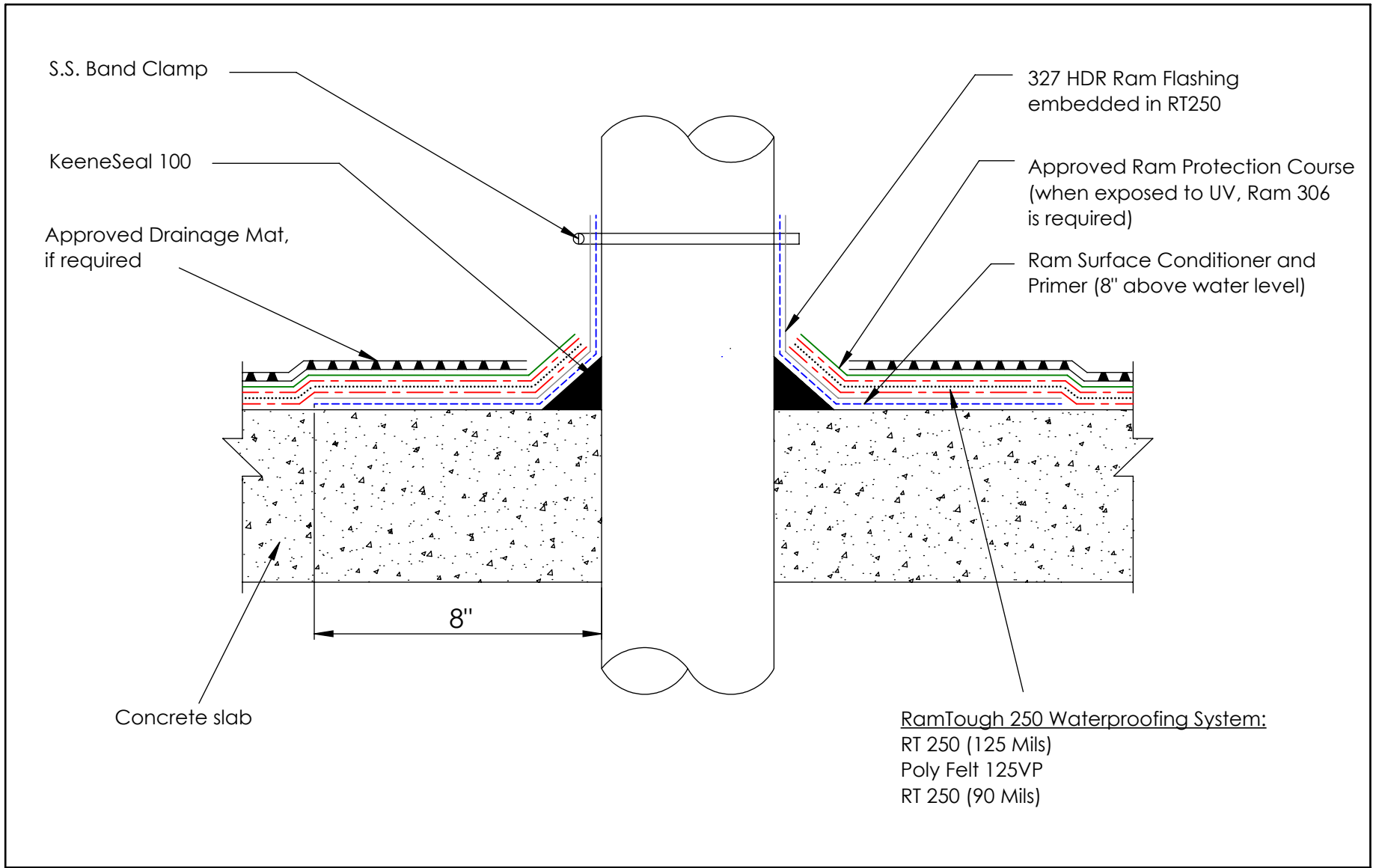
* Drawing not to scale

File Name:
 RT250 - System - 07

Drawing Number:
 07

Date:
 11/25/2019


Drawn By:
 N.C.

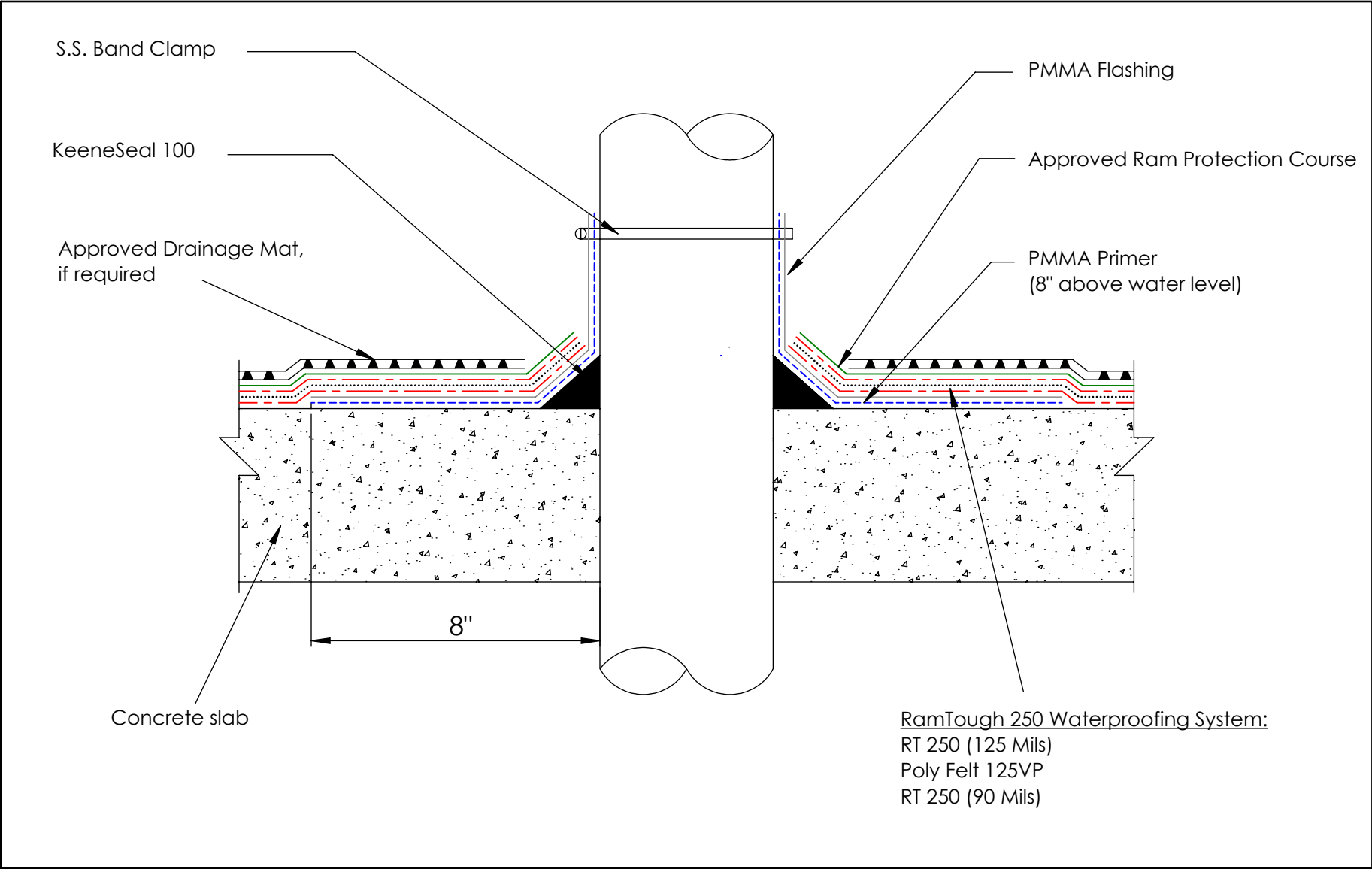


Concrete slab

8"

RamTough 250 Waterproofing System:
 RT 250 (125 Mils)
 Poly Felt 125VP
 RT 250 (90 Mils)

Contact Info: www.barrettroofs.com P: 1-800-647-0100		Drawing Detail: RT250 at Penetration * Drawing not to scale	File Name: RT250 - Detailed - 01A	Date: 11/21/2019
			Drawing Number: 01A	Drawn By: N.C.



RamTough 250 Waterproofing System:
 RT 250 (125 Mils)
 Poly Felt 125VP
 RT 250 (90 Mils)

Contact Info:

www.barrettroofs.com
 P: 1-800-647-0100



Drawing Detail:

RT250 at Penetration with PMMA
 onto substrate

* Drawing not to scale

File Name:

RT250 - Detailed - 02A

Drawing Number:

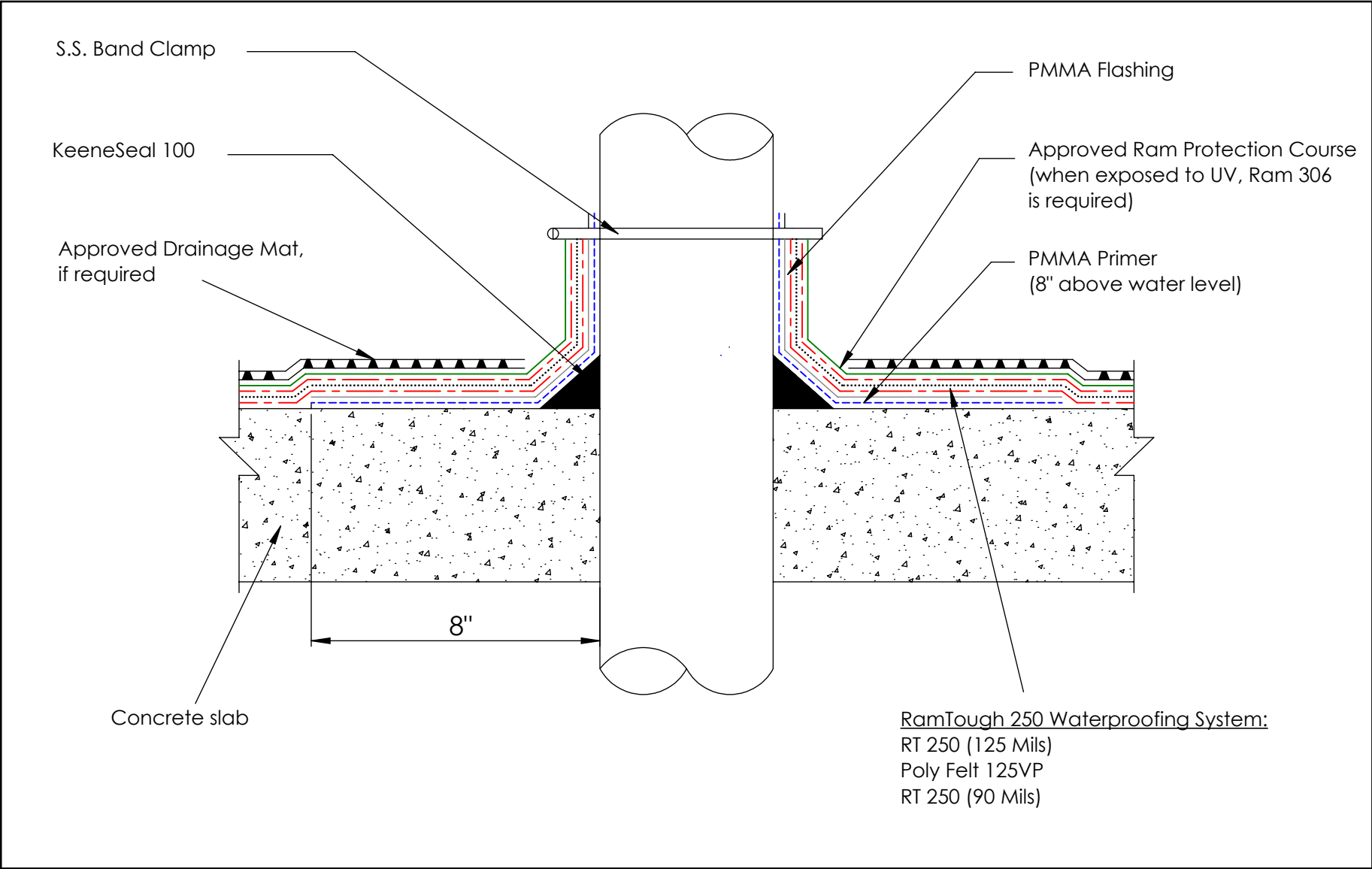
02A

Date:


11/21/2019

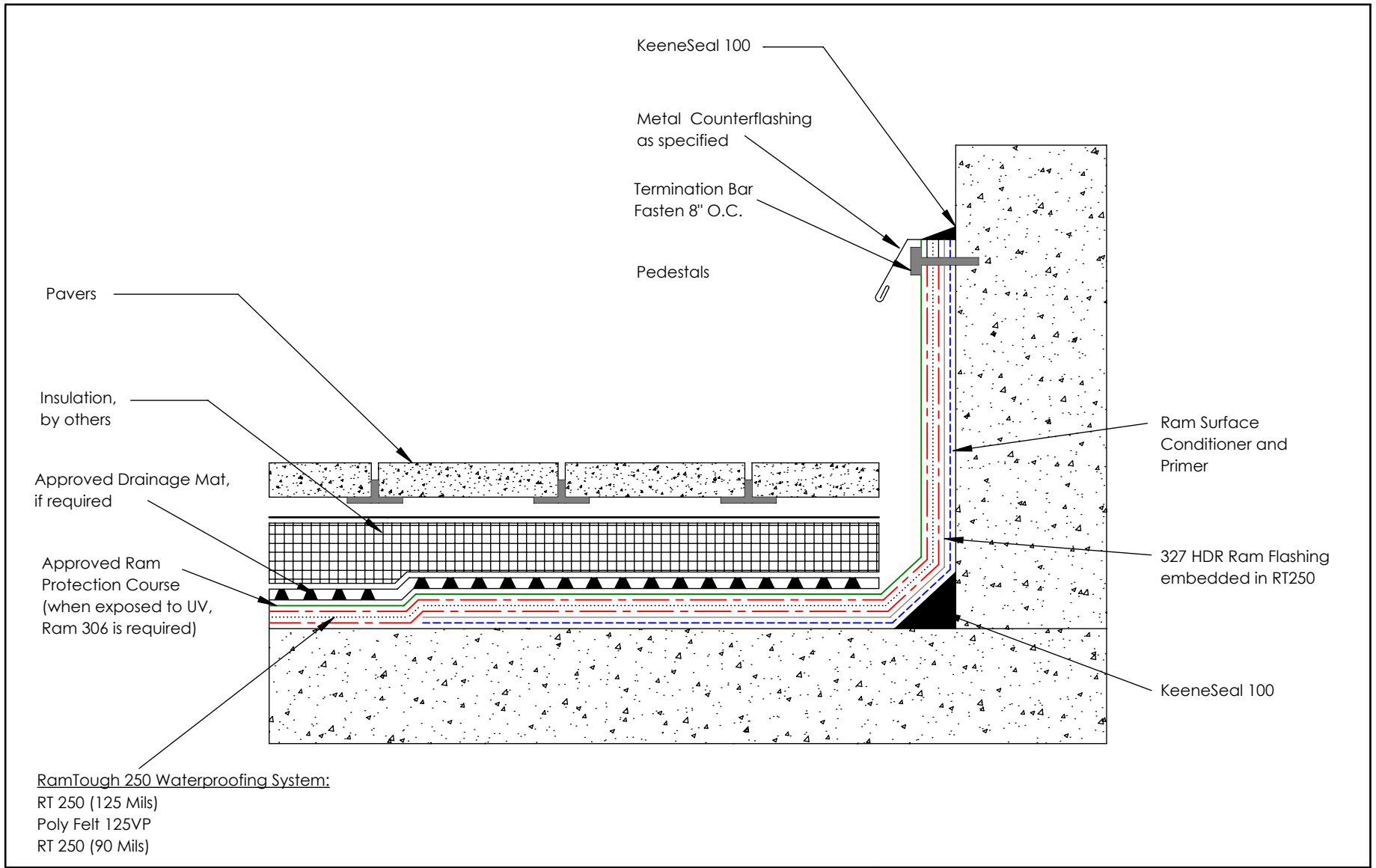
Drawn By:

N.C.



RamTough 250 Waterproofing System:
 RT 250 (125 Mils)
 Poly Felt 125VP
 RT 250 (90 Mils)

<p>Contact Info:</p> <p>www.barrettroofs.com P: 1-800-647-0100</p>		<p>Drawing Detail:</p> <p>RT250 at Penetration with PMMA over top RT</p> <p>* Drawing not to scale</p>	<p>File Name:</p> <p>RT250 - Detailed - 03A</p>	<p>Date:</p> <p>11/21/2019</p>
			<p>Drawing Number:</p> <p>03A</p>	<p>Drawn By:</p> <p>N.C.</p>



Contact Info:

www.barrettroofs.com
 P: 1-800-647-0100



Drawing Detail:

RT250 at Upturn

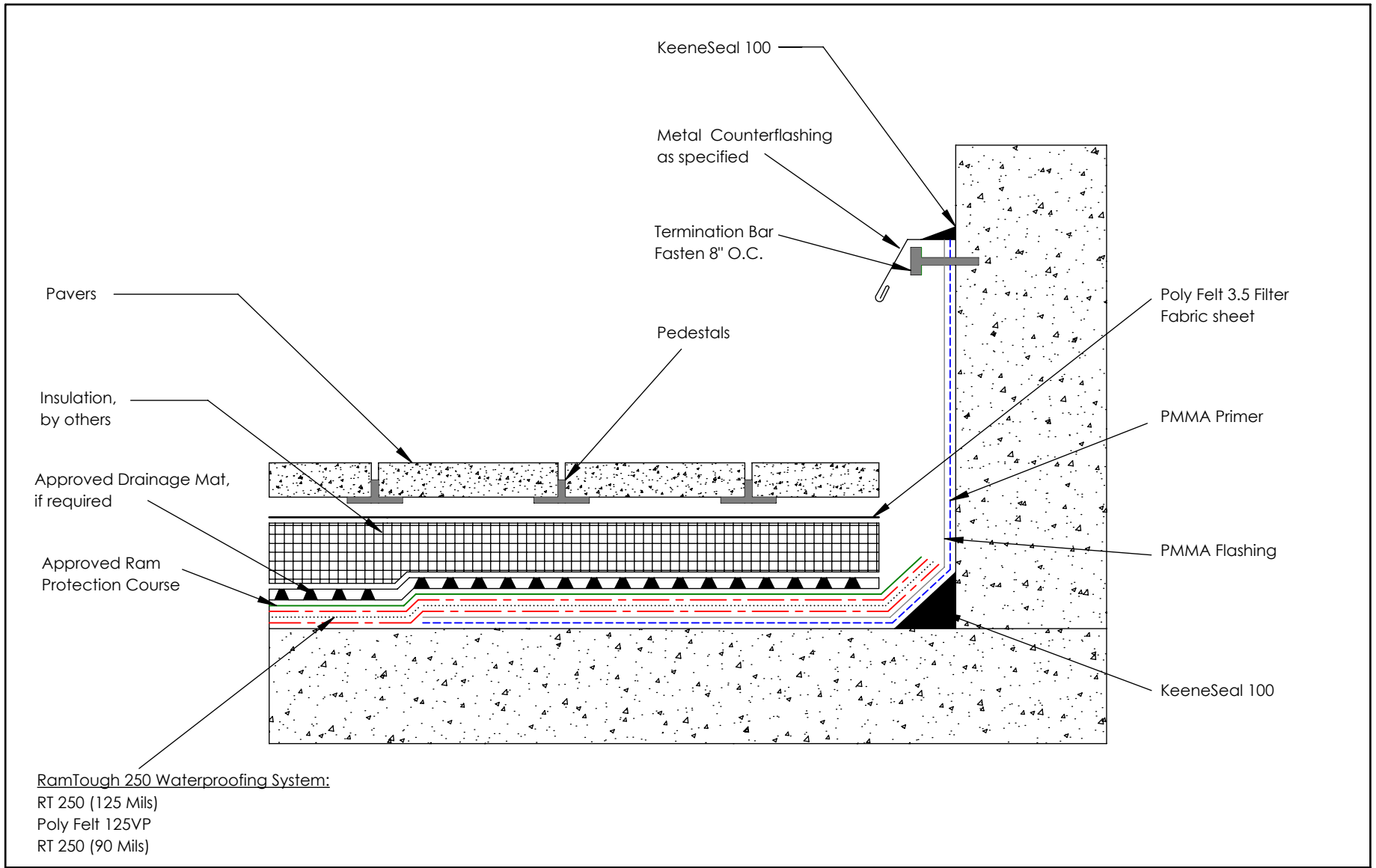
* Drawing not to scale


File Name:
RT250 - Detailed - 04A

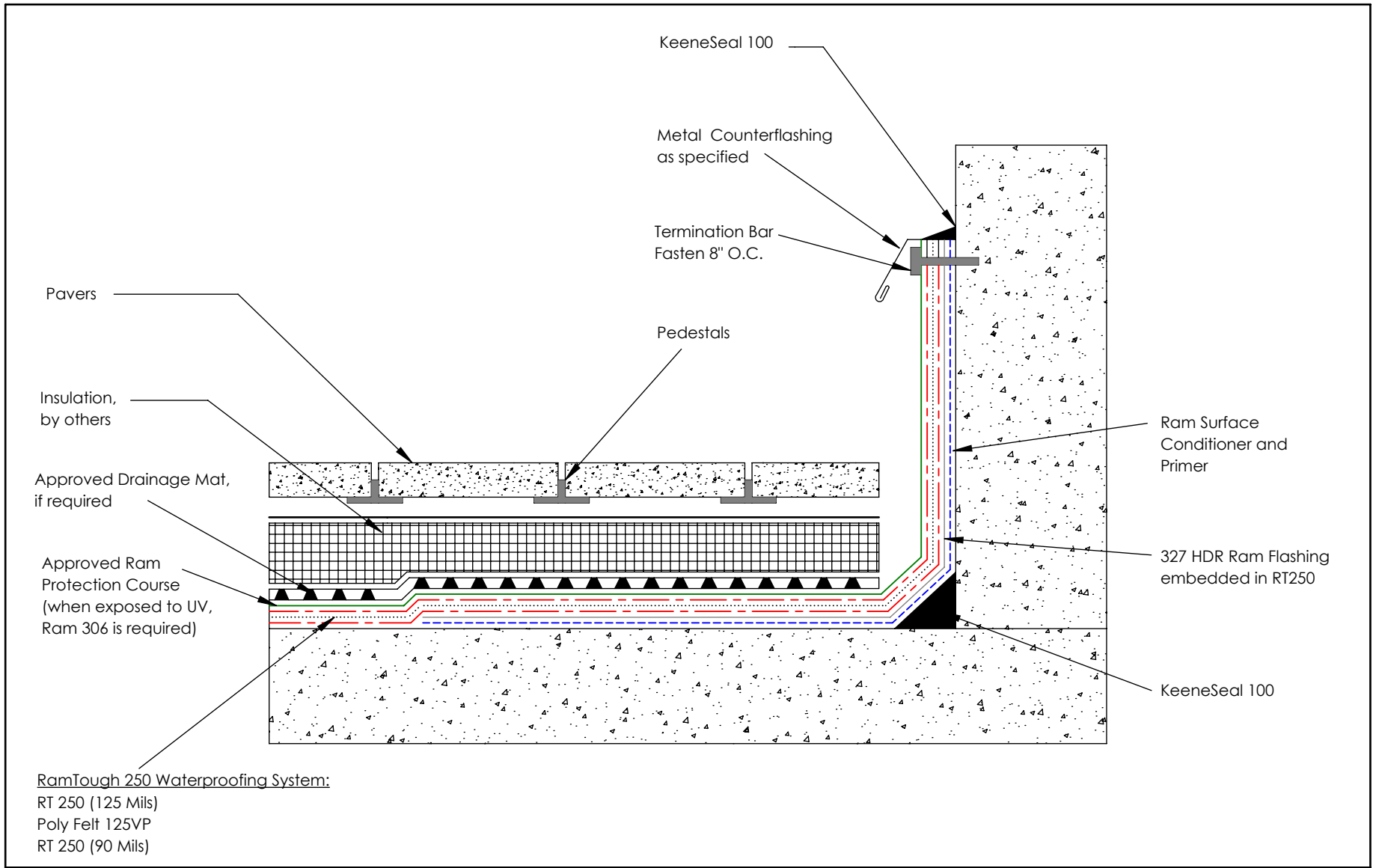
Drawing Number:
04A

Date:
11/21/2019


Drawn By:
N.C.



<p>Contact Info:</p> <p>www.barrettroofs.com P: 1-800-647-0100</p> 	<p>Drawing Detail:</p> <p>RT250 at Upturn with PMMA onto substrate</p> <p>* Drawing not to scale</p>	<p>File Name:</p> <p>RT250 - Detailed - 05A</p>	<p>Date:</p> <p>11/21/2019</p>
<p>Drawing Number:</p> <p>05A</p>	<p>Drawn By:</p> <p>N.C.</p>		



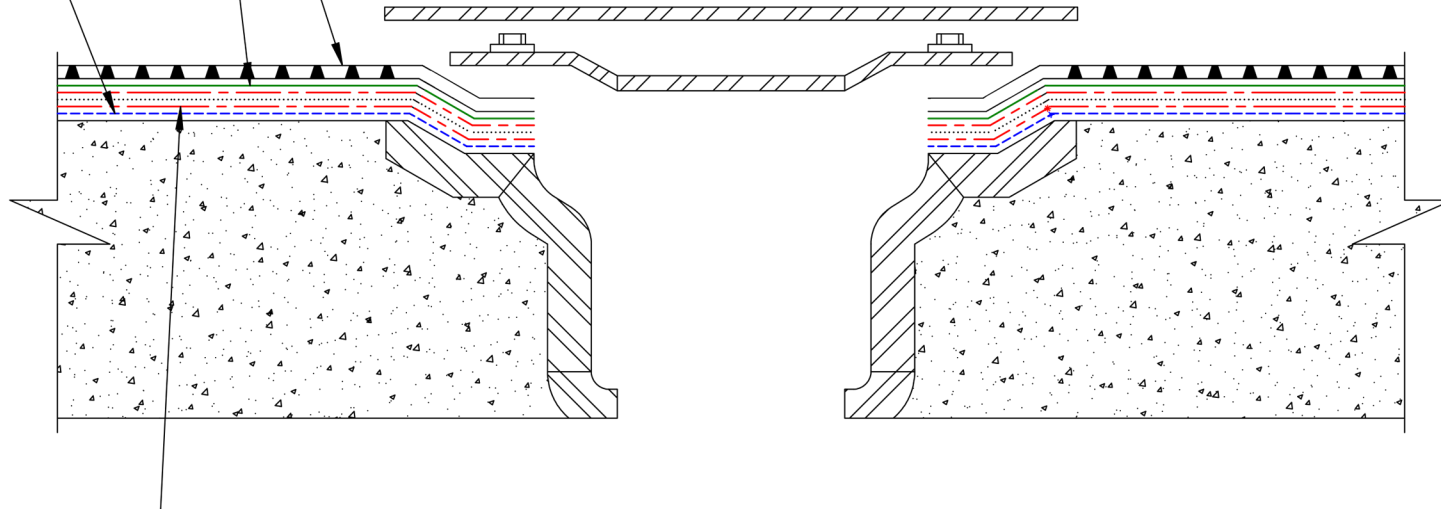
RamTough 250 Waterproofing System:
 RT 250 (125 Mils)
 Poly Felt 125VP
 RT 250 (90 Mils)

<p>Contact Info:</p> <p>www.barrettroofs.com P: 1-800-647-0100</p> 	<p>Drawing Detail:</p> <p>RT250 at Upturn with PMMA over top RT</p> <p>* Drawing not to scale</p>	<p>File Name:</p> <p>RT250 - Detailed - 06A</p>	<p>Date:</p> <p>11/21/2019</p>
		<p>Drawing Number:</p> <p>06A</p>	<p>Drawn By:</p> <p>N.C.</p>

Approved Drainage Mat,
if required

Approved Ram Protection
Course

Ram Surface Conditioner
and Primer



RamTough 250 Waterproofing System:

RT 250 (125 Mils)

Poly Felt 125VP

RT 250 (90 Mils)

Contact Info:

www.barrettroofs.com
P: 1-800-647-0100



Drawing Detail:

RT250 on Drain

* Drawing not to scale

File Name:

RT250 - Detailed - 07A

Drawing Number:

07A

Date:

11/21/2019

Drawn By:

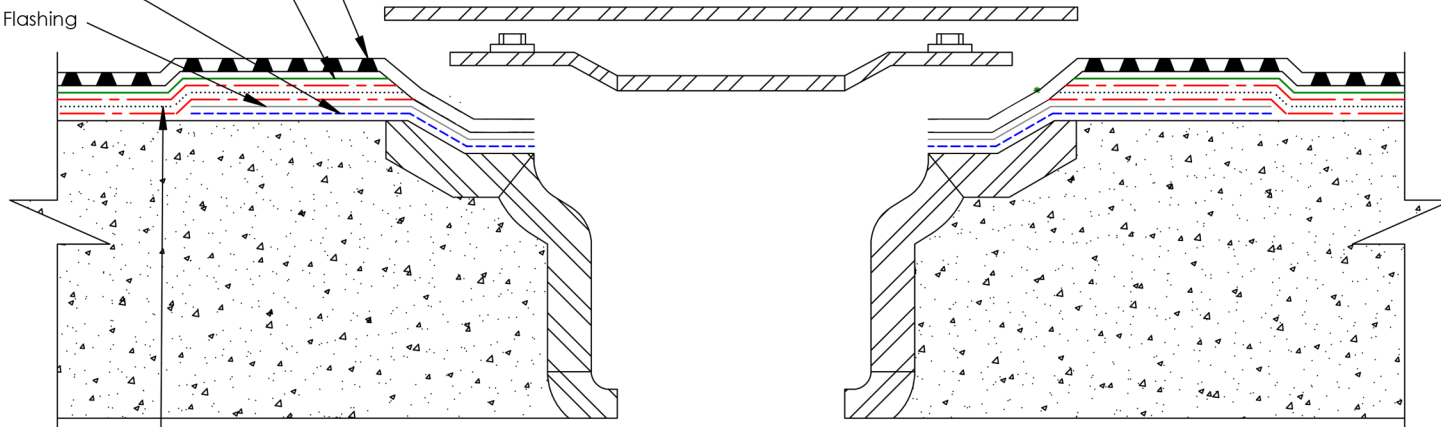
N.C.

Approved Drainage Mat,
if required

Approved Ram Protection
Course

PMMA Primer

PMMA Flashing



RamTough 250 Waterproofing System:

RT 250 (125 Mil)

Poly Felt 125VP

RT 250 (90 Mil)

Contact Info:

www.barrettroofs.com
P: 1-800-647-0100



Drawing Detail:

RT250 on Drain with PMMA

* Drawing not to scale

File Name:

RT250 - Detailed - 08A

Drawing Number:

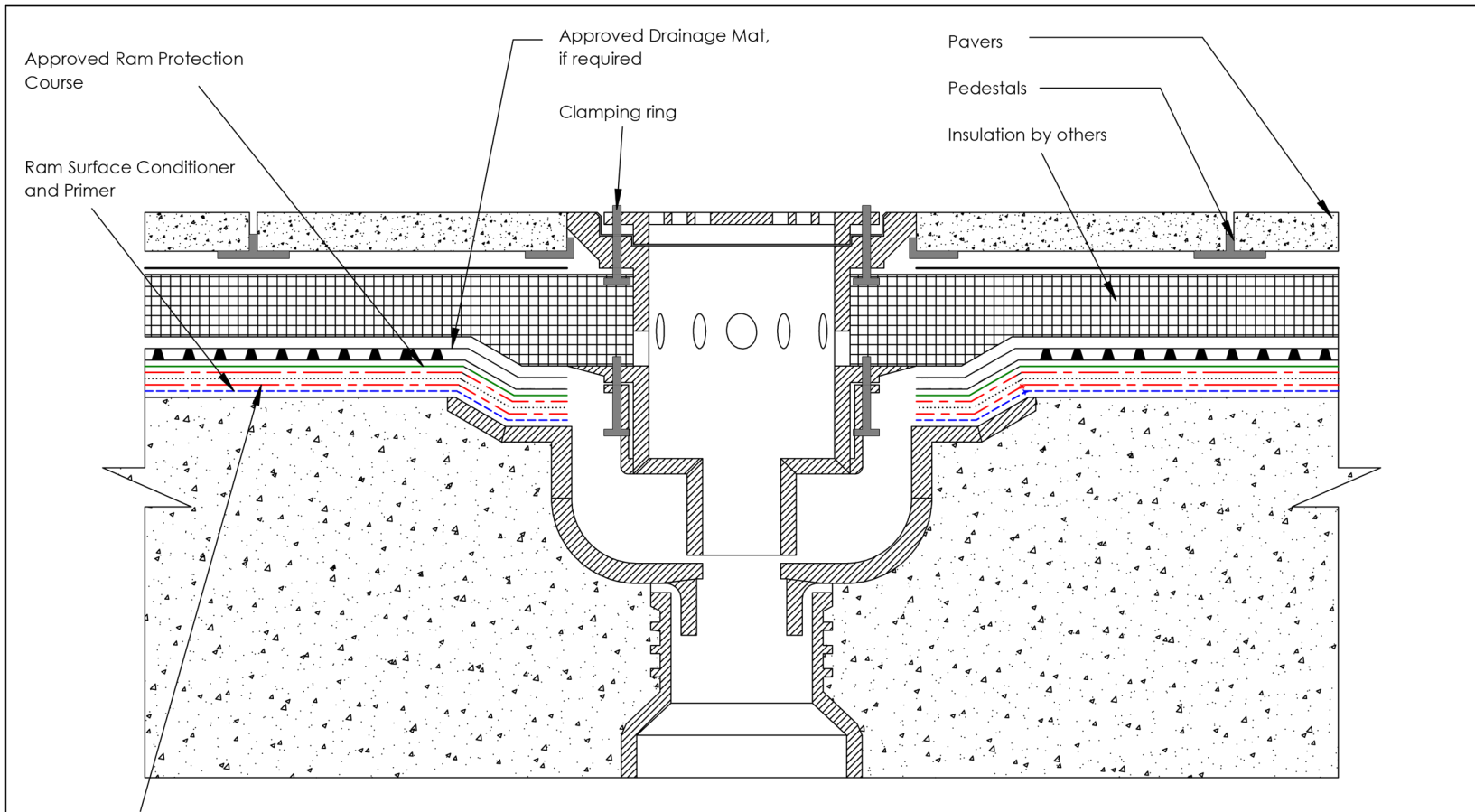
08A

Date:

11/21/2019

Drawn By:

N.C.



RamTough 250 Waterproofing System:

- RT 250 (125 Mils)
- Poly Felt 125VP
- RT 250 (90 Mils)

Contact Info:

www.barrettroofs.com
P: 1-800-647-0100



Drawing Detail:

RT250 on bi-level drain

* Drawing not to scale

File Name:

RT250 -Detailed - 09A

Drawing Number:

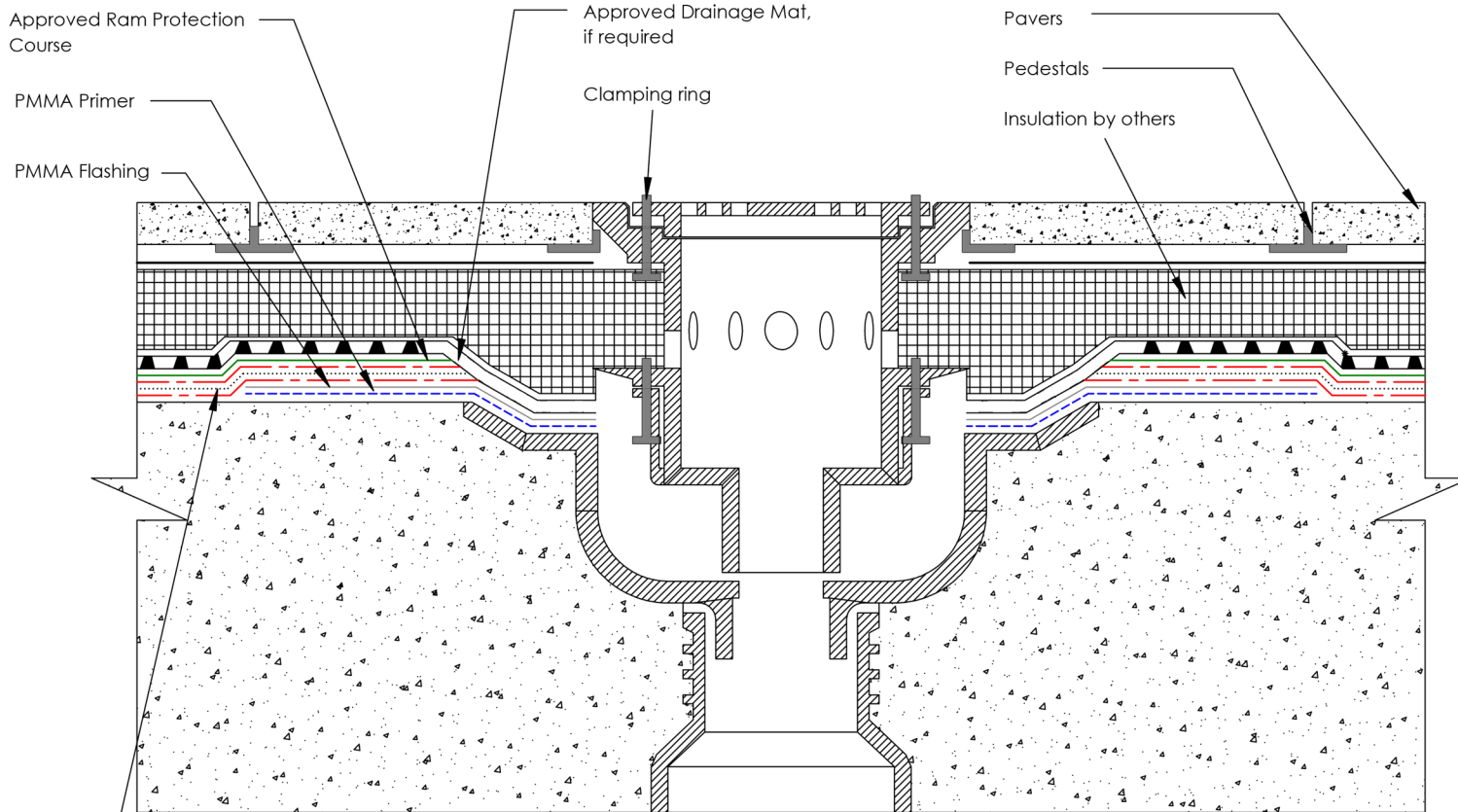
09A

Date:

11/21/2019

Drawn By:

N.C.



RamTough 250 Waterproofing System:

RT 250 (125 Mils)
 Poly Felt 125VP
 RT 250 (90 Mils)

Contact Info:

www.barrettroofs.com
 P: 1-800-647-0100



Drawing Detail:

RT250 on bi-level drain with
 PMMA Flashing

* Drawing not to scale

File Name:

RT250 - Detailed - 10A

Drawing Number:

10A

Date:

11/21/2019

Drawn By:

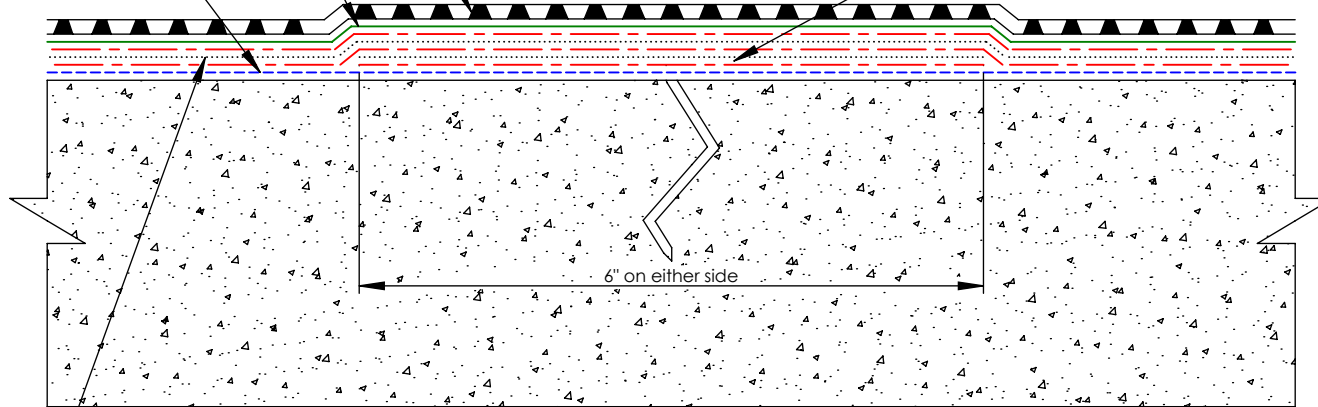
N.C.

Approved Drainage Mat, if required

Approved Ram Protection Course

Ram Surface Conditioner and Primer

Detail layer of RamTough 250 extending 6" past either side of crack



6" on either side

RamTough 250 Waterproofing system:

RT 250 (125 Mils)

Poly Felt 125 VP

RT 250 (90 Mils)

Contact Info:

www.barrettroofs.com

P: 1-800-647-0100



Drawing Detail:

RT250 Treatment of crack

* Drawing not to scale

File Name:

RT250 - Detailed - 11A

Drawing Number:

11A

Date:

11/21/2019

Drawn By:

N.C.

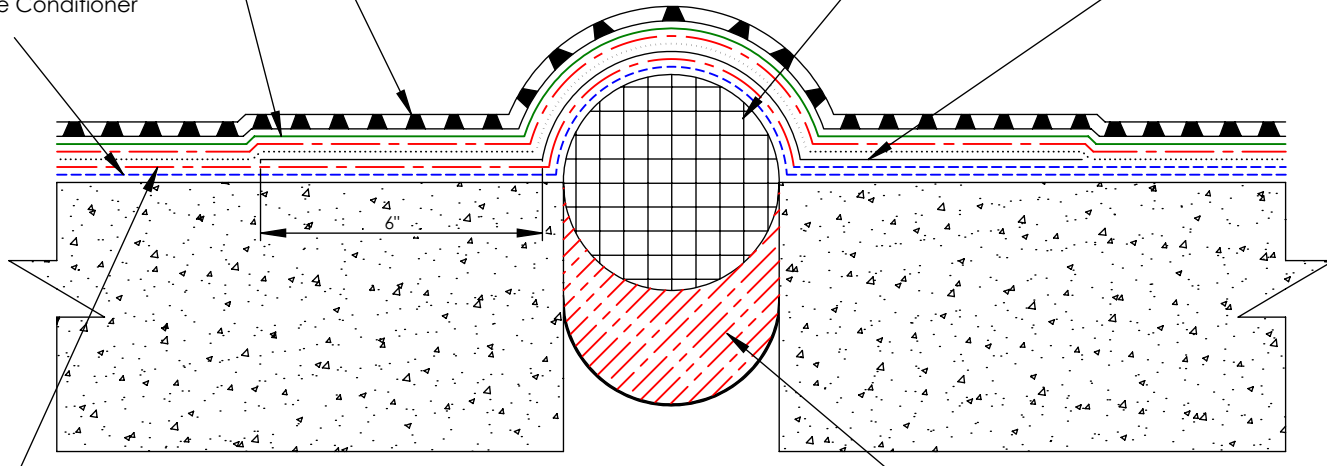
Approved Drainage Mat,
if required

Approved Ram Protection
Course

Ram Surface Conditioner
and Primer

Closed cell Backer Rod

327 HDR Ram Flashing set in
RamTough 250. Minimum 6"
on either side of joint



Fill gap flush with RamTough 250

RamTough 250 Waterproofing System:

- RT 250 (125 Mils)
- Poly Felt 125VP
- RT 250 (90 Mils)

Contact Info:

www.barrettroofs.com
P: 1-800-647-0100



Drawing Detail:

RT250 treatment floor to floor
expansion joint (uncured Neoprene)

* Drawing not to scale

File Name:

RT250 - Detailed - 12A

Drawing Number:

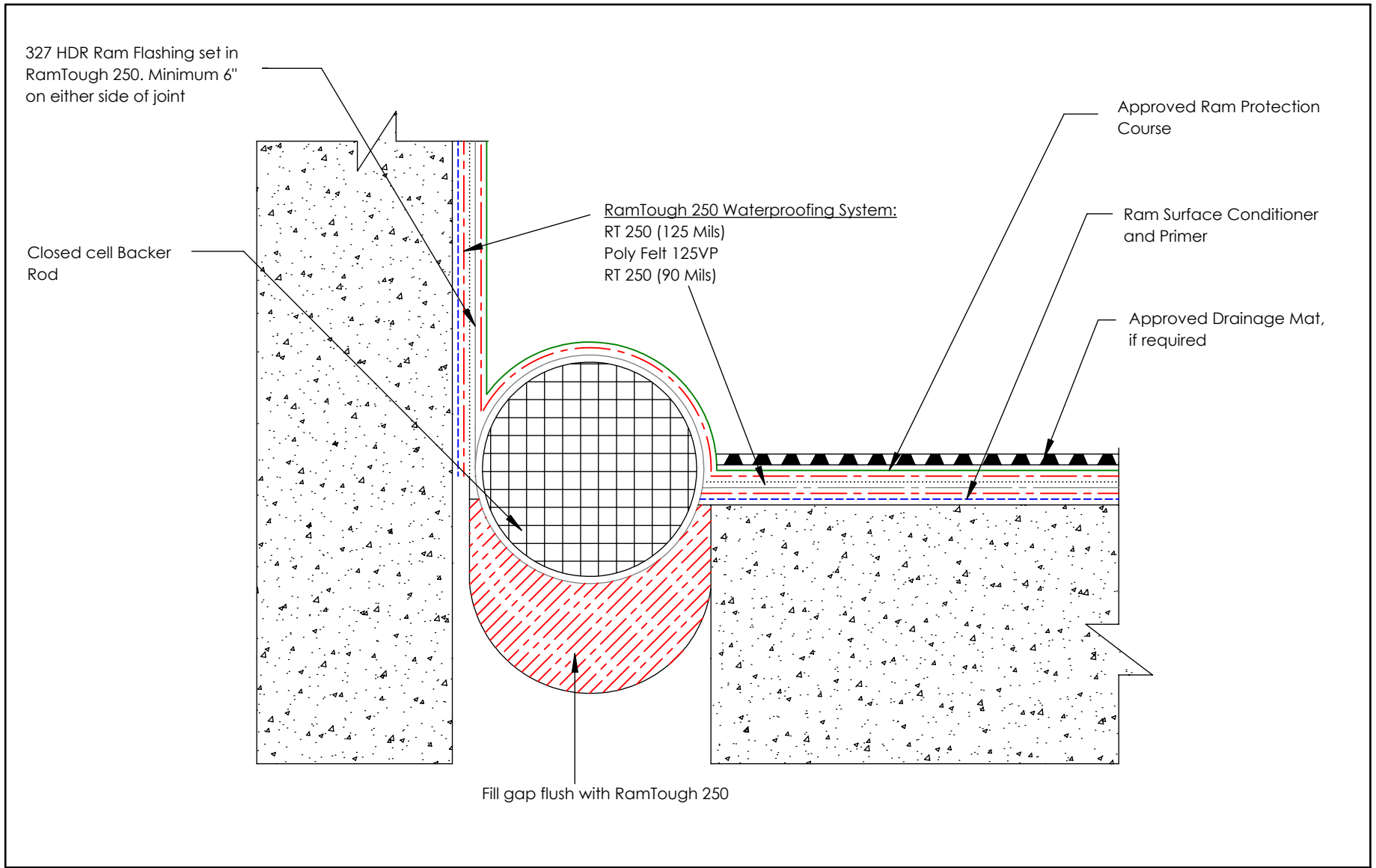
12


Date:

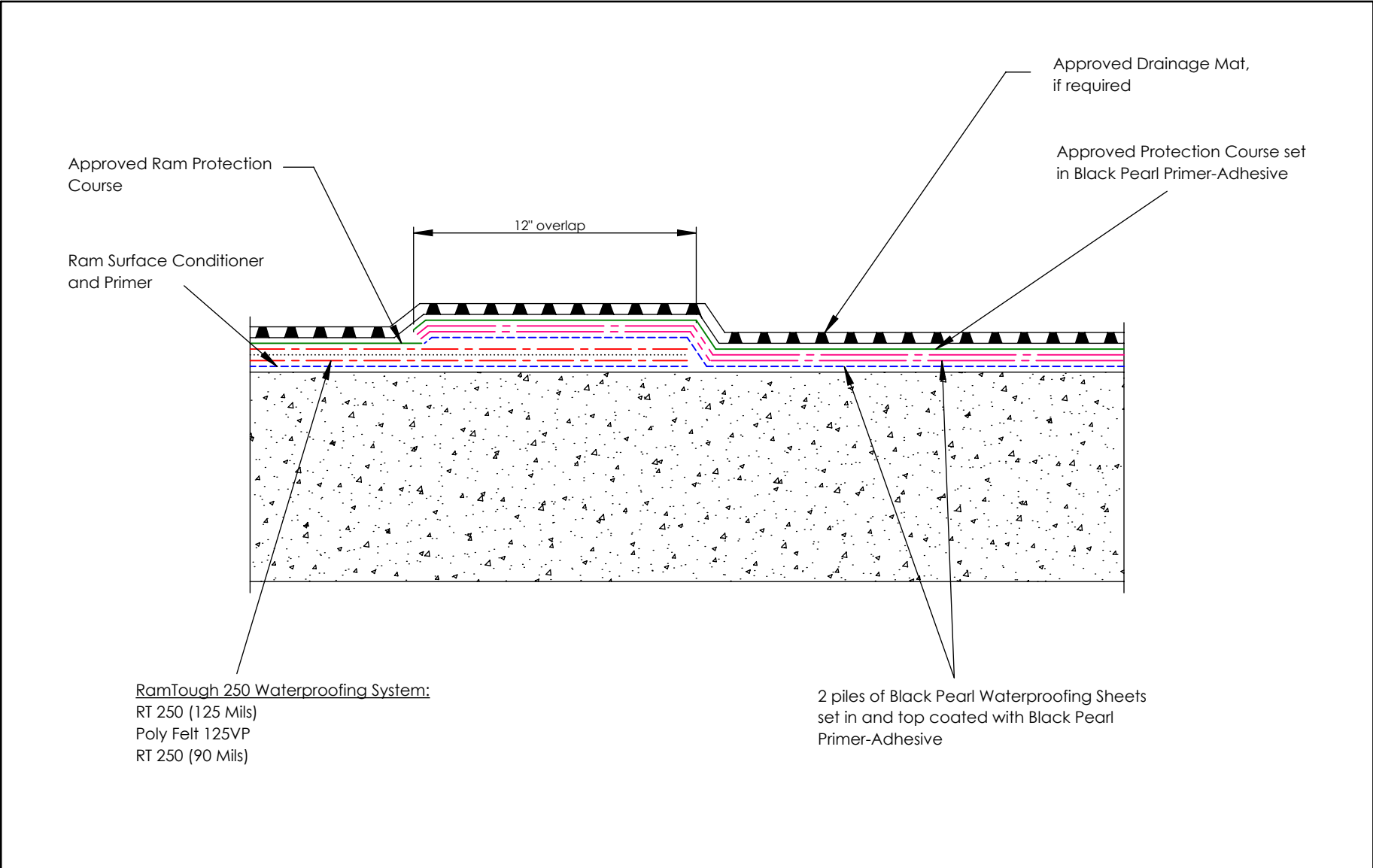
11/21/2019


Drawn By:

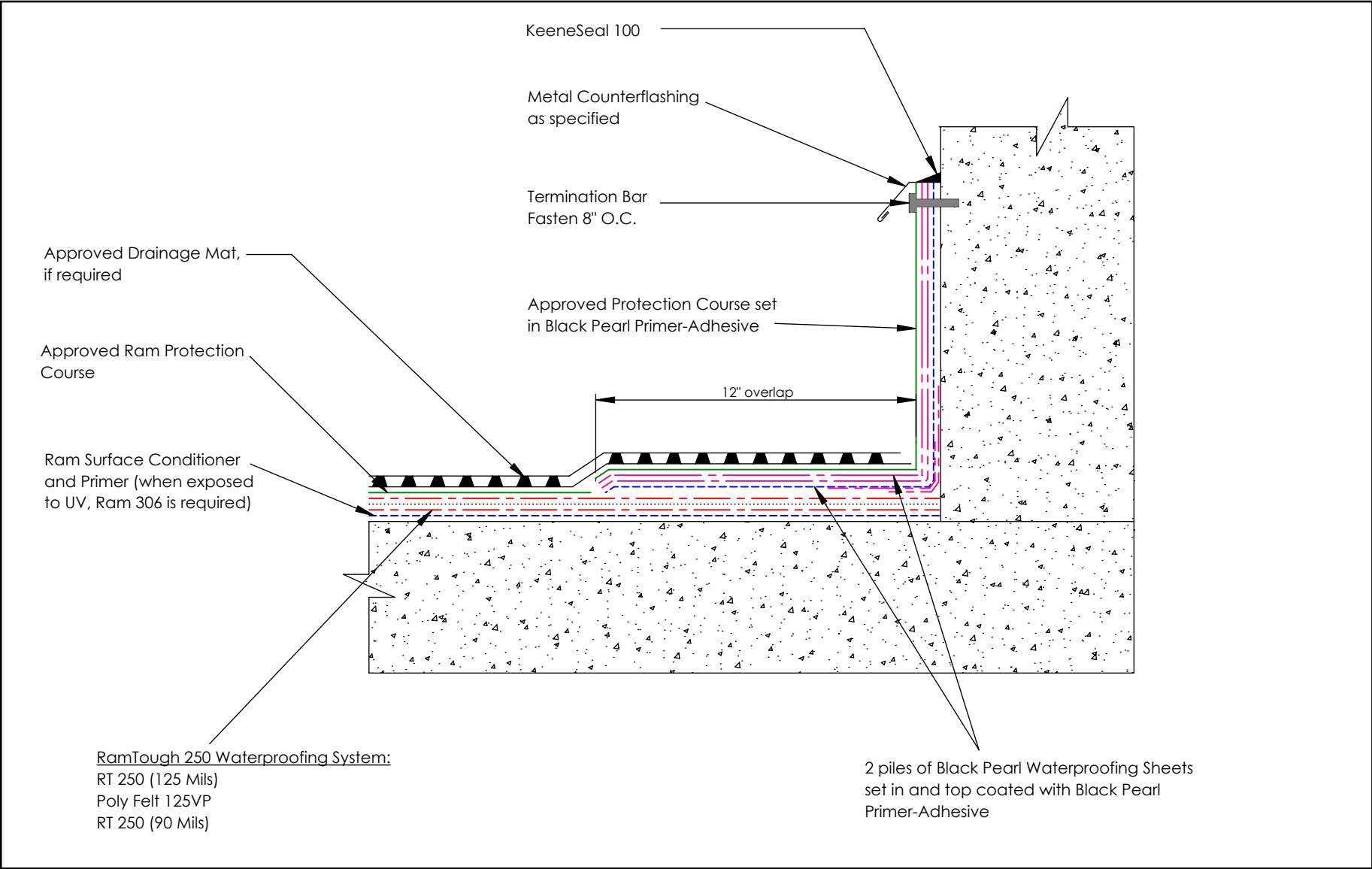
N.C.



<p>Contact Info:</p> <p>www.barrettroofs.com P: 1-800-647-0100</p> 	<p>Drawing Detail:</p> <p>RT250 treatment floor to floor to wall expansion joint (uncured Neoprene)</p> <p>* Drawing not to scale</p>	<p>File Name:</p> <p>RT - Detailed - 13A</p>	<p>Date:</p> <p>11/21/2019</p>
		<p>Drawing Number:</p> <p>13</p>	<p>Drawn By:</p> <p>N.C.</p>



<p>Contact Info:</p> <p>www.barrettroofs.com P: 1-800-647-0100</p> 	<p>Drawing Detail:</p> <p>RT250 to BP on plaza deck</p> <p>* Drawing not to scale</p>	<p>File Name:</p> <p>RT- Connections - 01B</p>	<p>Date:</p> <p>11/21/2019</p>
		<p>Drawing Number:</p> <p>01B</p>	<p>Drawn By:</p> <p>N.C.</p>



Contact Info:

www.barrettroofs.com
 P: 1-800-647-0100



Drawing Detail:

RT250 to BP on Upturn

* Drawing not to scale

File Name:
 RT - Connection - 02B

Drawing Number:
 02B

Date:
 11/21/2019

Drawn By:
 N.C.