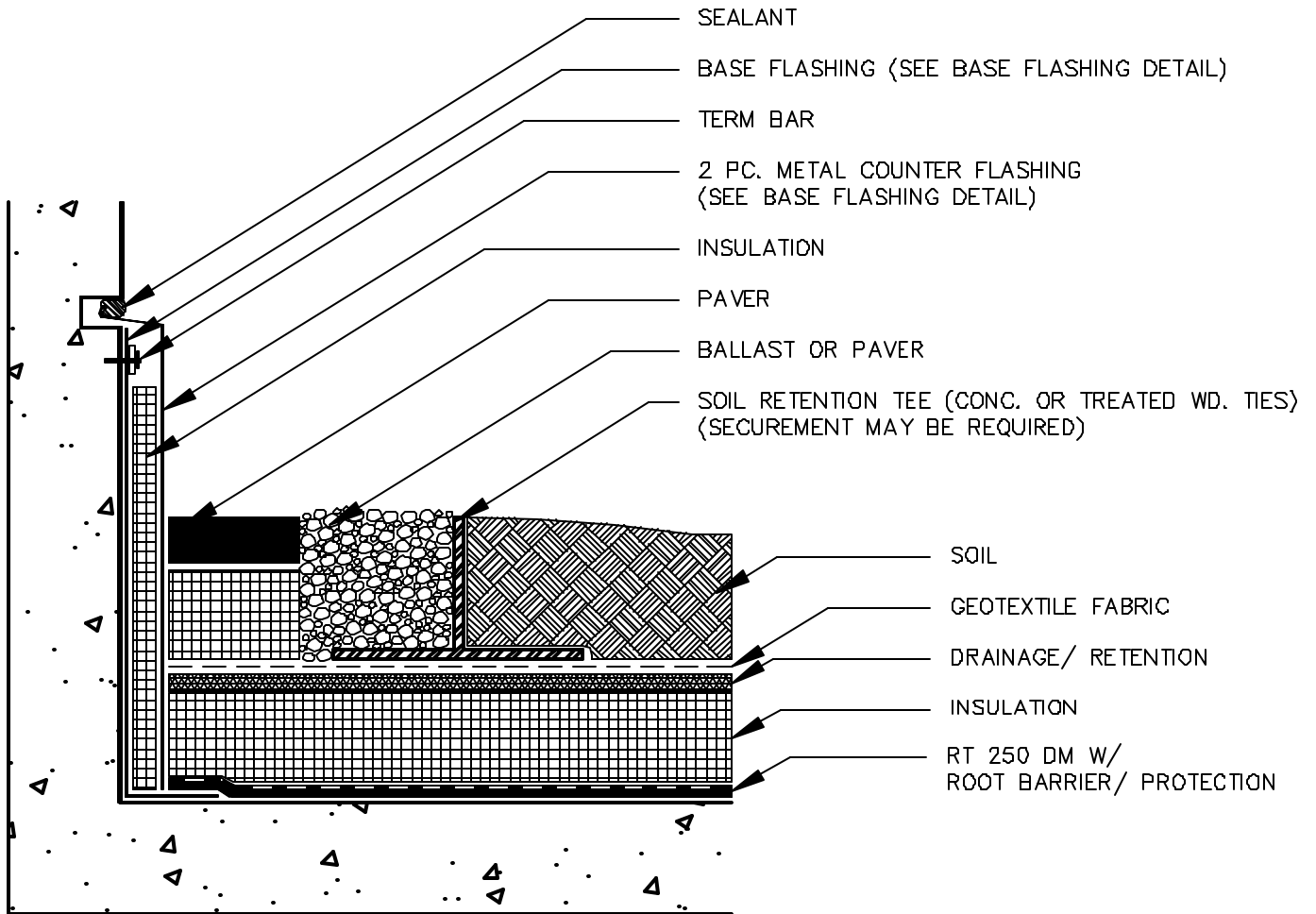


# GREEN ROOF – ROOFSCAPE PERIMETER CONDITION



NOTE: DETAIL SHOWN AS LOW PROFILE

NOTE: BASE FLASHING SHALL EXTEND 8" ABOVE WATER LINE

BARRETT COMPANY  
GRPC01

FOR TECHNICAL ASSISTANCE  
CALL 1-800-647-0100  
[www.barrettroofs.com](http://www.barrettroofs.com)