



Between the World  
and The Weather  
Since 1928

PRODUCT DATA SHEET

# Black Pearl® Waterproofing Systems

Below Grade • On Grade • Above Grade

## PRODUCT DESCRIPTION

**BLACK PEARL®** Waterproofing Systems are composed of two primary products:

- **Black Pearl® Primer•Adhesive (BP•PA)**
- **Black Pearl® Waterproofing Membrane (BP•WM)**

Both components are based upon the same core formula of select, unoxidized asphalt cement base, butyl rubber, styrene isoprene styrene (SIS), neoprene rubber, styrene-butadiene-styrene rubber (SBS), carbon black, fillers, plasticizers and curing agents. The Primer•Adhesive also has an aliphatic solvent that is within acceptable OSHA and EPA current regulations.

The core reinforcement of Black Pearl® Sheet Membrane is a woven polyester fabric providing extra tensile strength and stability. This fabric is impregnated and coated with the Black Pearl® rubberized formula. The compatibility factor between the two components is 100 percent with the Primer•Adhesive acting as a catalyst on the sheets and chemically fusing the system elements together, including flashings, into a semi-monolithic, thick waterproof membrane.

Installed in accordance with Barrett Standard Details (generally ASTM D-5898 modified), quality control tested and approved, the Black Pearl® waterproofing installation is warranted to provide a long, watertight life backed by Barrett's more than 8 decades of waterproofing and 4 decades of rubberized asphalt experience.

## FEATURES

- Simple unheated application to 0°F
- Strong elastomeric properties
- Fast installation over green concrete
- Redundancy of design details
- Complete Tech Services available
- Compliant with OSHA/EPA Regulations
- One all-season grade of material

## BENEFITS

- Easy application, less dependent of labor expertise
- Compliant with expansion/contraction stresses
- Redundancy offers unique forgiveness
- No burners, propane, fuel or fire issues
- Resists over 200 psi of pressure over cracks

## BLACK PEARL® SHEET (BP•WM) PACKAGING

Sheet thickness	50 mils
Roll width	39.5 in. (1 meter)
Roll length	66 lineal feet.
Net roll coverage	200 sq.ft.
Roll weight	53 lbs.
Pallet size	48" x 48" x 48"
Rolls per pallet	20
Weight per pallet	1,095 lbs. (approx.)
Pallets per truckload	22-24 (approx.)

## TYPICAL PHYSICAL PROPERTIES

2 Ply System, ASTM D-6769	Test Method	Typical Results
Breaking Strength, lbf/in	ASTM D-146	89MD, 70XD
Elongation, %	ASTM D-146	46MD, 64XD
Puncture Strength, lbf	ASTM E-154, S10	202
Tear Strength, lbf	ASTM D-1004	25MD, 23XD
Hydrostatic Resistance, (Mullen) psi	ASTM D-751 Procedure A	250
Water Vapor Permeance, perms (desiccant)	ASTM E-96	0.04
*Bonded Pull, lbs/Ft. <sup>2</sup>	ASTM C-836	200
Low Temp Crack Bridging	ASTM C-1305	Pass -15°F
Extensibility After Heat Aging	ASTM C-1522	Pass
Adhesion Strength lbf/in, CMV	ASTM C-836	1.5
Resistance to water, visual	ASTM D-2939 Section 15	Pass
Remain in-place during Application, visual	ASTM C-836	Pass
Wind Uplift, lbs/Ft. <sup>2</sup>	FM 4474/	200
Sheet Ductility °F	TAS 114D/	58°
Passes the ICC-ES AC 29 Table 1 for use as waterproofing and damproofing over concrete, CMU and plywood.		
Black Pearl Primer-Adhesive	Test Method	Typical Results
Solids Content %	ASTM C-1250	77
Softening Point °F	ASTM D-36	220
Penetration, 100g @ 77°F, dmm	ASTM D-5	162
VOC Rule 66 Naptha	EPA	<230 g/L.

## APPLICATION GUIDELINES

Black Pearl® warranted waterproofing systems are only installed by select Barrett Approved Contractors.

Preinstallation meetings with all stakeholders are highly recommended. Prior to job start the site should be inspected, confirming all drains are properly installed and operative, all pipe and sleeve penetrations in place and secure, suitable material storage and access determined and most importantly, that all substrates and detailing are acceptable. Installing Contractor shall keep copies of Black Pearl Installation Guide and Details on jobsite at all times work is progressing.

## STORAGE

All rolls should remain in boxes on pallets until ready for installation. Store off the ground and covered with breathable canvas tarps. Do not use polyethylene or non-breathable films. Summer storage temperatures should not exceed 90°F.

## PRIMER-ADHESIVE (BP•PA) PACKAGING

Weight	42 lbs. per 4.75 gal pail (also available in 55 gallon drums)
Pallet size	36 pails/pallet/39" x 48" x 45"H

BP-PA is compatible with XPS and EPS insulation, EPDM, PVC, most plastics, asphaltic material and coal tar.

## APPLICATION PRECAUTIONS

- Do not apply to visually wet surfaces
- Do not apply with torch or any other unapproved methods
- Avoid contact with petroleum products, oils, grease, animal fats and other foreign materials which could affect this product's bond to its substrate or its performance.
- Not for use with potable water collection systems.
- Provide adequate ventilation in congested or enclosed spaces.
- A moist cure is recommended for new concrete. Do not use unapproved curing agents.

**READ SAFETY DATA SHEET BEFORE USING  
FOR PROFESSIONAL ROOFING CONTRACTOR USE ONLY**

## PRODUCT SAFETY INFORMATION

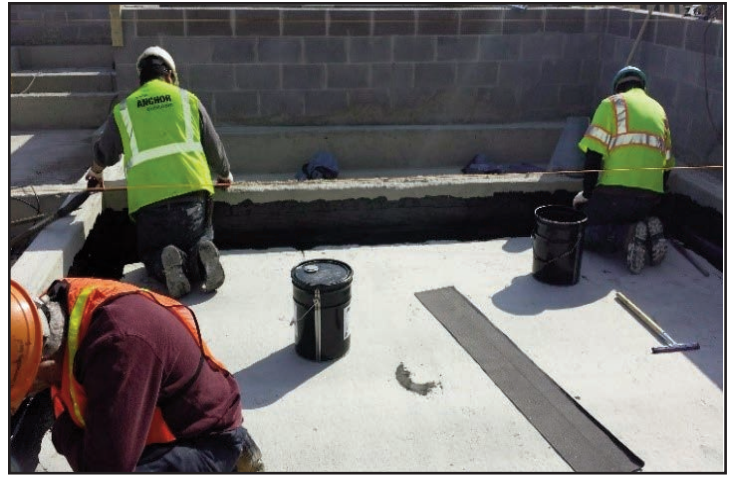
Barrett Black Pearl® Membrane offers no unusual health or safety risks for a product of this nature. As with any roofing process, proper ventilation, clothing and eye protection is important.

For specific information, contact the Barrett Company for a current Safety Data Sheet on this product.

The user should not assume that all safety measures are indicated or that other measures may not be required.

### Note

All statements, information and data given herein are believed to be accurate and reliable, but are presented without guaranty, warranty or responsibility of any kind, expressed or implied, except as may be indicated herein. Statements or suggestions concerning possible uses of our products are made without representation or warranty that any such use is free of patent infringement and are not recommendations to infringe any patent.



Last Revised June 2018