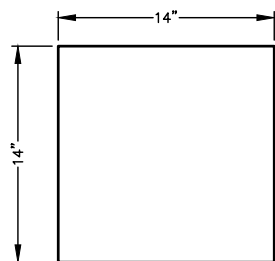


STEP #1:

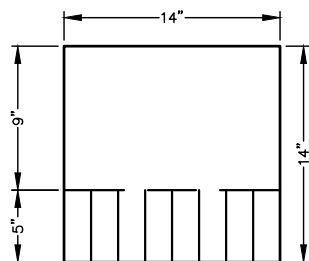
CUT TWO PIECES OF BLACK PEARL® MEMBRANE 4" LONGER THAN CIRCUMFERENCE OF PIPE.

EXAMPLE: A 3" PIPE CIRCUMFERENCE IS 9-1/2". CUT TWO PIECES OF BLACK PEARL® MEMBRANE 14" LONG BY 14" HIGH.



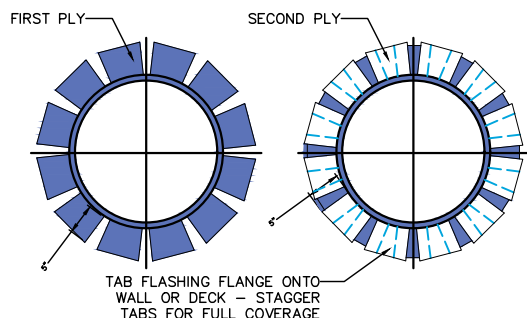
STEP #2:

CUT TABS APPROXIMATELY 1.5" WIDE AND 5" LONG ON EACH PIECE. FOLD ON THE 5" LINE.



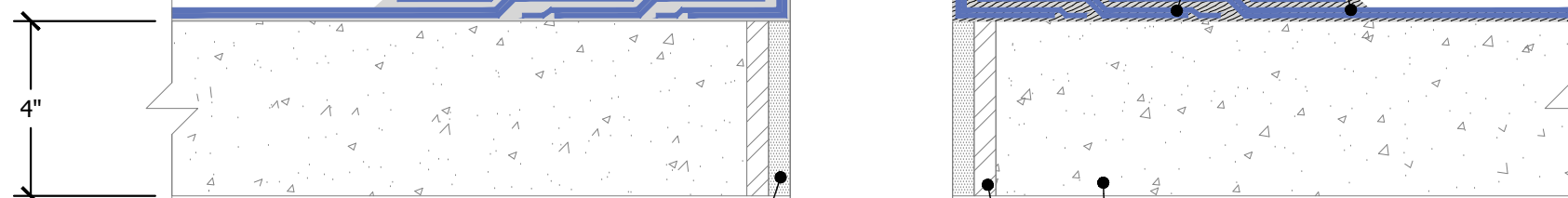
STEP #3:

APPLY BLACK PEARL® PRIMER-ADHESIVE 10" UP THE PIPE AND 6" OUT ON THE DECK SURFACE. APPLY THE BLACK PEARL® SHEET AROUND THE PIPE AND 5" ON THE DECK. COAT WITH BLACK PEARL® PRIMER-ADHESIVE. APPLY THE SECOND PIECE OF MEMBRANE 5" ON THE DECK, STAGGERED OVER UNDERLYING LAPS.



STAINLESS STEEL DRAWBAND
RAM PIPE BOOT (STEP #7)

(2) PLYS BLACK PEARL® SHEETS AS FLASHING SET IN AND TOP COATED WITH BLACK PEARL® PRIMER ADHESIVE (STEP #1-3)



GROUT SOLID

CONCRETE OR OTHER SUBSTRATE

METAL SLEEVE IF REQUIRED

PROTECTION COURSE OR STRIPPING SET IN BLACK PEARL® PRIMER ADHESIVE

BLACK PEARL® TARGET PATCHES (STEP #4-5)

FIELD PLYS BLACK PEARL® WATERPROOFING SHEETS (STEP #6)

EXAMPLE: 3" PIPE

STEP #4:

CUT A SQUARE TARGET PATCH OF BLACK PEARL® MEMBRANE 6" LARGER THAN PIPE DIAMETER. SCRIBE A CIRCLE THE SIZE OF THE PIPE AND MAKE (8) PIE-SHAPED CUTS AS SHOWN.

FIGURE 1

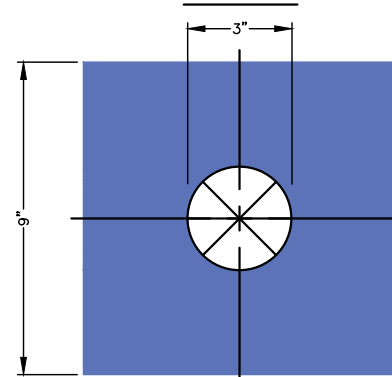


FIGURE 2

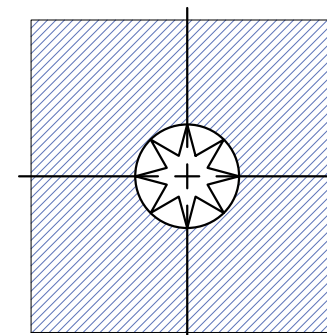
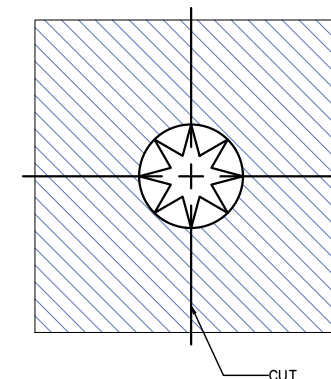


FIGURE 3

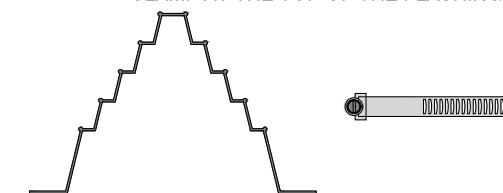


STEP #6:

INSTALL FIELD PLYS INTO BLACK PEARL® ADHESIVE AND ON TOP OF TARGET PATCHES

STEP #7:

INSTALL RAM BOOT INTO BLACK PEARL® ADHESIVE AND STAINLESS STEEL WORMDRIVE CLAMP AT THE TOP OF THE FLASHING.



PREP

CONCRETE DECKS MUST BE MADE REASONABLE SMOOTH, DRY, FREE OF DIRT, LAITANCE, CURING AGENTS, DEBRIS AND OTHER CONTAMINANTS.

CLEAN

ALL PIPE PENETRATIONS (METAL OR PVC) SHOULD BE CLEANED AND FREE FROM ANY SURFACE CONTAMINANTS OR RUST.

BLACK PEARL - System Information

Black Pearl Primer Adhesive
Apply 15-20 mils of Black Pearl® Primer Adhesive with a non-serrated straight edge squeegee at the rate of 45 sq. ft./gal. Allow it to dry to a tacky condition (approximately 20 minutes) before installing the Black Pearl® Sheet Membrane.

Black Pearl Primer Adhesive
Black Pearl Sheet Membrane
Rub the sheet into the Black Pearl® Primer Adhesive with a stiff broom, squeegee, hand garden roller, or similar method. Lap all edge seams a minimum of 3 inches. Stagger all end laps a minimum of 6 inches. Coat the top of the first ply with 15-20 mils of Black Pearl® Primer Adhesive at the rate of 45 sq.ft./gal. Allow to dry to tack state.

Black Pearl Primer Adhesive
Black Pearl Sheet Membrane
Smoothly embed the second ply, offsetting the side laps of the first ply by half a sheet's width. Any "Fishmouths" or wrinkles in the fabric need to be cut out and detailed.

RT250 - Additional Product Information and Components

Black Pearl Primer Adhesive

Black Pearl Butyle Tape

Ram Protection Course (Ram 203,306,306FR)

BUTYL OR POLYURETHANE SEALANT
Ram Mastic, Keene Seal or Liquid Flash 100

RamDrain Drainage Mat

THE BARRETT COMPANY

www.BarrettRoofs.com
☎ 1-800-647-0100

DRAWN BY:	LDS	SYSTEM:	BLACK PEARL
DATE:	12.02.2024	CATAGORY:	PE
DETAIL NAME:	PIPE FLASHING	PENETRATION	
		DETAIL #:	BP-PE-01